

How do I: Use Tweak CTRL+ALT+DEL Options Tool?

Written by Fisnik Hasani, March 6, 2010

How to use?

Open the Tweak tool.

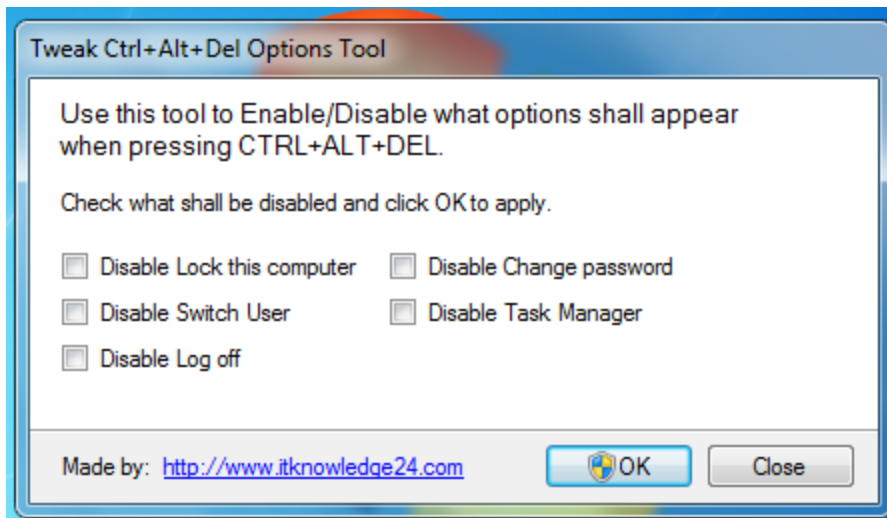


Figure A: The tweak Ctrl+Alt+Del options tool.

Check one (or more) options to disable. Click OK.

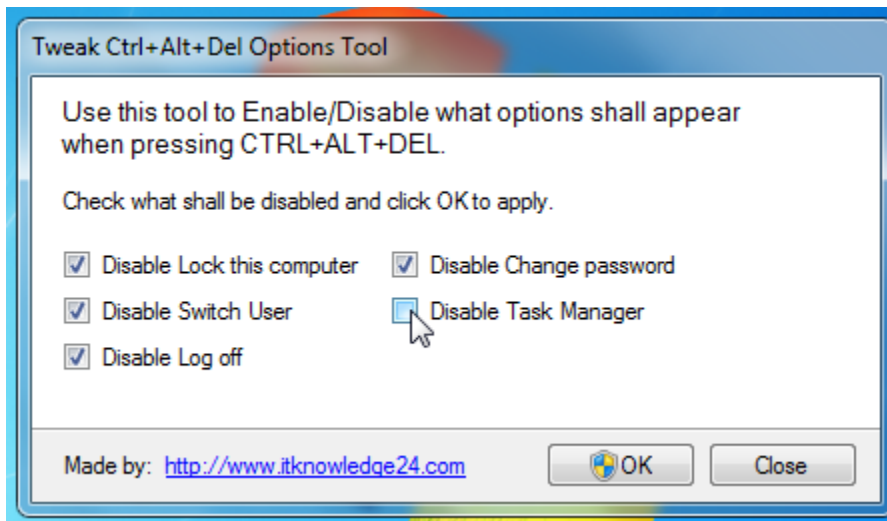


Figure B: The tweak Ctrl+Alt+Del options tool, check which options to disable.

That's it.

The result

Before.



Figure C: Before applying this tool, we see all the options.

After.



Figure D: After applying this tool, we see nothing, the options are gone.

For more information visit: <http://www.itknowledge24.com>.

Copyright © 2010 ITknowledge24.com. All rights reserved